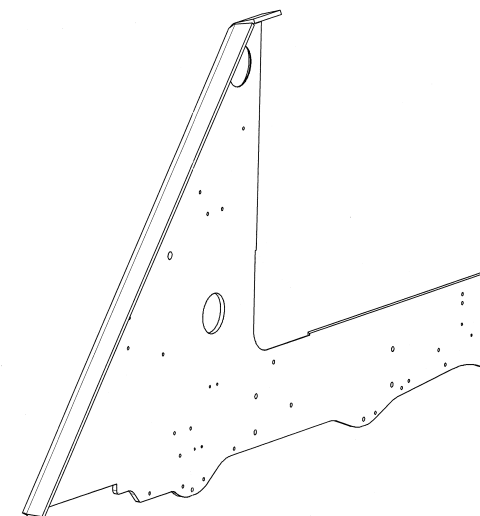
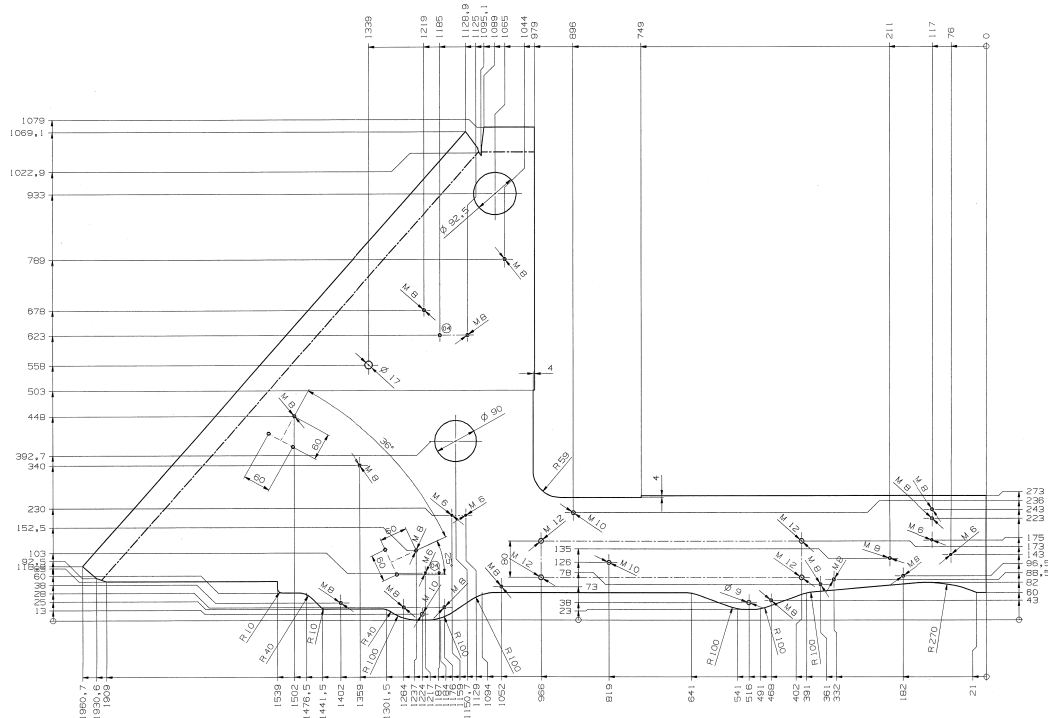
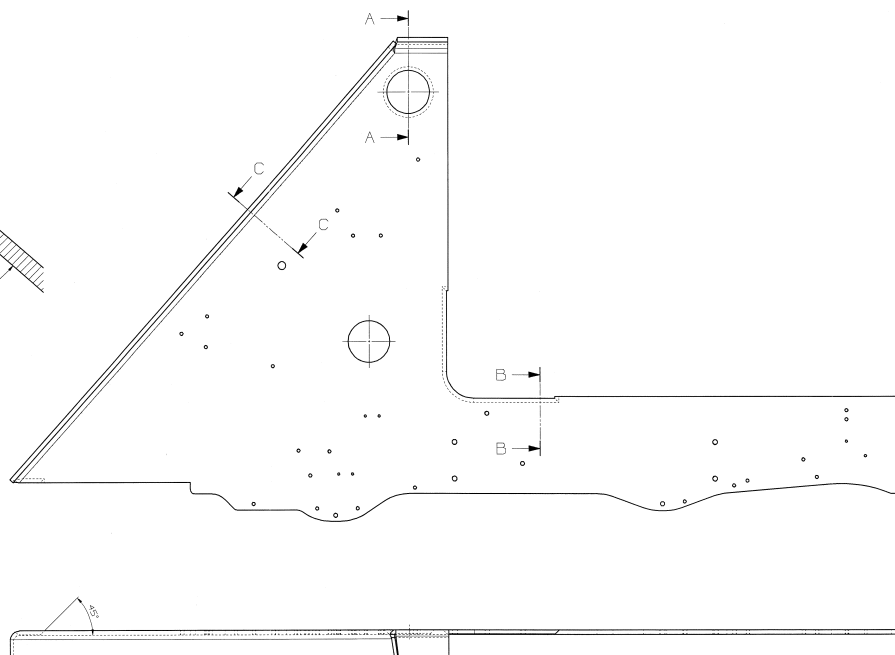


A diagram showing a quarter-circle sector with a radius of 80 and a central angle of 90°. A shaded region is formed by the arc and a line segment of radius R10.



PROVEDL/A

54

4

ADP	APPROVED FOR
-----	--------------

WEBOEC. TOLERANCE

General tolerances for laser cutting
(DIN 2300 - S - 0, up to 3mm / -0,05 over 3
General tolerances for ribbing / bends
(DIN 9730 - 2 - 0

[illegible]

Doc-No	2000132252	Version	04
--------	------------	---------	----